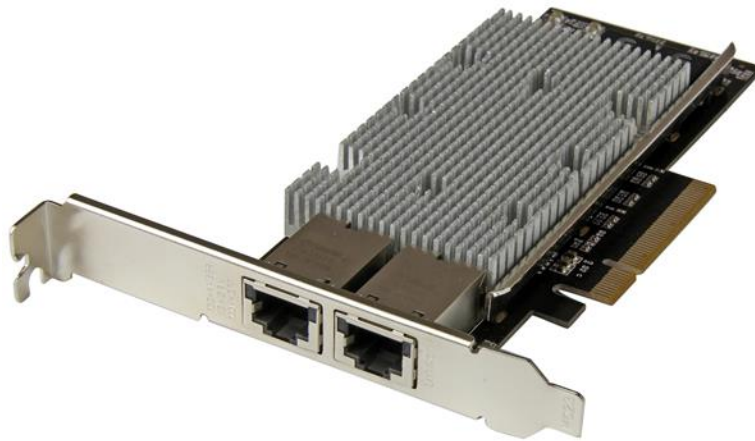


## 2-Port PCI Express 10GBase-T Ethernet Network Card - with Intel X540 Chip

Product ID: ST20000SPEXI



Now, you can add 10 GbE networking, while minimizing your deployment costs. This 10Gbase-T network card (NIC) lets you add two RJ45 ports through a single PCI Express slot, to deliver reliable high-speed network connections to your workstations and servers without draining your budget.

### **Versatile and cost effective**

Compatible with a broad range of operating systems, this versatile dual-port NIC is ideal for many business applications that require upgrades to servers or workstations. It's a cost-effective way to enhance your server or computer capabilities by adding two powerful 10-Gigabit Ethernet ports, with support for advanced features such as VLAN tagging, jumbo frames, and Auto-MDIX.

## **Reliable, high-performance connectivity**

This 2-port PCI Express 10GBase-T network card features the Intel® X540 chipset, designed to deliver the power, performance and enhanced capabilities you need for reliable network connections to your server or computer. The X540 chipset provides many advanced features including Intel® Virtualization Technology for connectivity and PXE network boot support.

Compliant with IEEE 802.3/u/ab standards, the network card delivers a dependable way to upgrade or replace your existing network ports with dual 100/1000/10G compatible RJ45 ports, providing throughput capability of up to 10Gbps in each direction (20Gbps total). It connects through a single, four-lane (x8 or higher) PCI Express slot.

## **Easy installation**

With a dual-profile design, the PCI Express network card installs easily into a wide range of computer/server chassis, regardless of form factor. The card comes equipped for installation in a full-sized chassis, and includes a low-profile/half-height installation bracket that you can use as needed.

The ST20000SPEXI is backed by a StarTech.com 2-year warranty and free lifetime technical support.

### Certifications, Reports and Compatibility



### Applications

- Upgrades to servers or workstations in need of enhanced performance, advanced features and greater reliability
- Upgrade a 10/100/1000 Ethernet port on your computer to 10GbE networking
- Ideal for high-demand database servers and mission-critical systems that need redundant network connectivity
- Add networking capabilities to an old system with no Ethernet port

### Features

- Add two 100/1000/10Gbase-T RJ45 ports, providing cost-effective network connectivity for high bandwidth workstations and servers
- Intel X540 chipset with Intel® Virtualization Technology for Connectivity
- Up to 20Gbps (full duplex) bandwidth per port
- Compliant with PCI Express Rev2.0 specification, using PCIe x8 (or higher) slot
- PXE network boot support
- Fully compliant with IEEE 802.3, IEEE 802.3u, IEEE 802.3ab
- Support for 802.3ad Link Aggregation
- Auto-MDIX support
- Autonegotiation support
- Up to 15K jumbo frame support
- IEEE802.3az Energy Efficient Ethernet (EEE)
- Supports IEEE 802.1Q VLAN tagging
- Full or low-profile (LP bracket included) installation

<b>Hardware</b>	Warranty	2 Years
	Bus Type	PCI Express
	Card Type	Standard Profile (LP bracket incl.)
	Chipset ID	Intel - X540
	Industry Standards	IEEE 802.3an (10GBASE-T), IEEE 802.3ab (1GBASE-T), IEEE 802.3u (100BASE-T), IEEE 802.3az (EEE - Energy Efficient Ethernet) PCI Express Rev 2.0
	Interface	RJ45 (10 Gigabit Ethernet)
	Port Style	Integrated on Card
	Ports	2
<b>Performance</b>	Auto MDIX	Yes
	Compatible Networks	100/1000/10000 Mbps (10Gb)
	Full Duplex Support	Yes
	Jumbo Frame Support	15K max.
	Maximum Data Transfer Rate	20Gbps (full-duplex), 10Gbps (half-duplex)
	Promiscuous Mode	Yes
	Supported Protocols	IEEE 802.3ad (link aggregation), IEEE 802.1q (VLAN tagging)
<b>Connector(s)</b>	Connector Type(s)	1 - PCI Express x8 Male
	External Ports	2 - RJ-45 Female
<b>Software</b>	OS Compatibility	Windows® 7, 8, 8.1, 10 Windows Server® 2008 R2, 2012, 2012 R2, 2016 Linux 2.4.x to 4.11.x <i>LTS versions only</i> ESXi 5.1/5.5
<b>Special Notes / Requirements</b>	System and Cable Requirements	Available PCI Express x8 slot
<b>Indicators</b>	LED Indicators	2 - Link Speed 2 - Link Activity
<b>Environmental</b>	Humidity	20~80% RH
	Operating Temperature	5°C to 50°C (41°F to 122°F)
	Storage Temperature	-20°C to 60°C (-4°F to 140°F)
<b>Physical Characteristics</b>	Color	Black
	Product Height	4.7 in [120 mm]

	Product Length	6.4 in [163 mm]
	Product Weight	5.6 oz [160 g]
	Product Width	0.8 in [20 mm]
<b>Packaging Information</b>	Shipping (Package) Weight	8.8 oz [250 g]
<b>What's in the Box</b>	Included in Package	1 - PCI Express 10GBase-T Ethernet card 1 - low-profile bracket 1 - instruction manual

Product appearance and specifications are subject to change without notice.