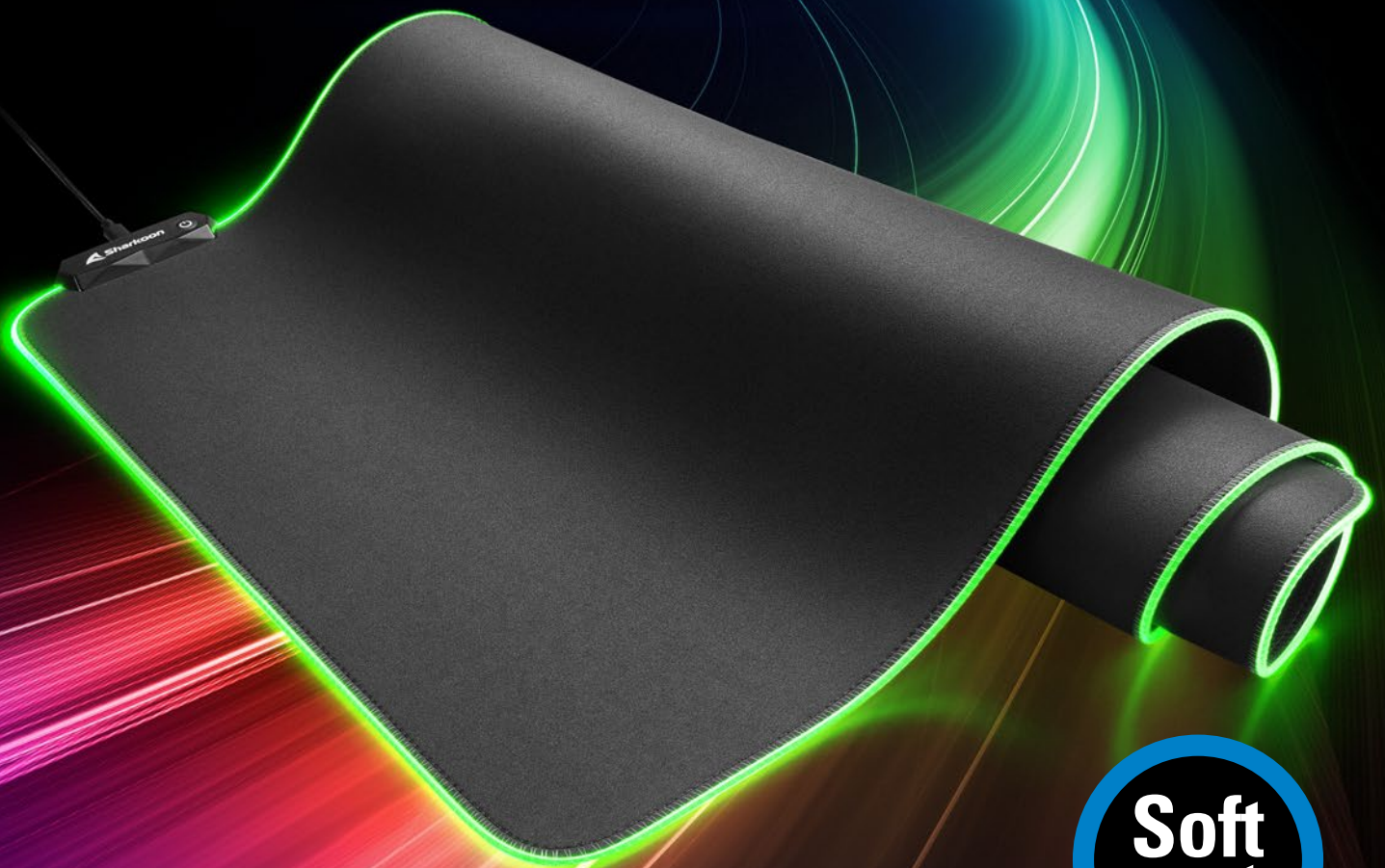




1337 RGB

ILLUMINATED GAMING MOUSE MAT

V2



Soft
mat

RGB
ILLUMINATION

FEATURES

- RGB illumination with various modes and colors
- Integrated RGB controller
- Water-repellent surface
- Nonslip rubber base

Top Features

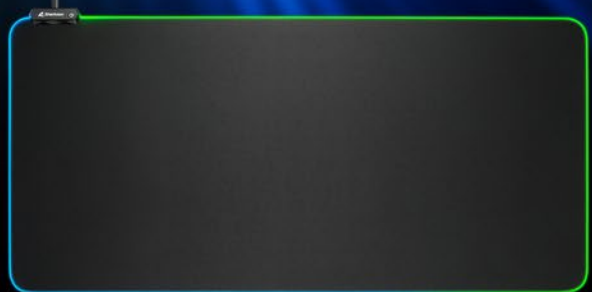


The 1337 RGB V2 gaming mat extends our series of popular mouse mats with another piece of high-quality gaming equipment. The mouse mat catches the eye with an RGB illumination which wraps around its edges. This can be adjusted using the built-in controller with impressive effects. The soft textile surface enables smooth gliding for sensitive mouse maneuvers, while the rubberized underside offers a firm hold. At the same time, the mouse mat is water-repellent and hard-wearing, being able to withstand intense use.

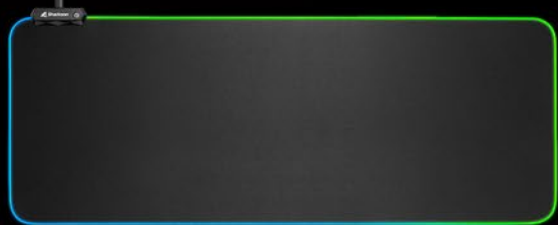
Made to Meet all Demands



SIZE 900 Dimensions (L x W x H):
900 x 425 x 3 mm



SIZE 800 Dimensions (L x W x H):
800 x 300 x 3 mm



SIZE 360 Dimensions (L x W x H):
360 x 270 x 3 mm



Available in three different sizes, the 1337 RGB V2 will fit on top of any desk. It is available in the variants 360, 800 and 900. With a length of 360 millimeters and a width of 270 millimeters, the 360 model is space-saving, but at the same time large enough for intensive mouse movements. With its dimensions of 800 by 300 millimeters, the 800 model has a significantly larger surface area, while still having a slim thickness. The 900 model is one of the largest of our mouse mats. Lying on the desk with its 900 millimeters length and 425 millimeters width, the 900 provides the mouse and keyboard with a non-slip hold as well as an enormous amount of room for sweeping maneuvers.

Visual Highlight for All Setups

An atmospheric lighting integrated into the edges gives the 1337 RGB V2 an impressive look. Four expressive lighting modes, such as single colors or pulsating color changes, can be freely controlled and set using the controller. The edging is sewn with thin nylon threads to ensure full luminosity, making the 1337 RGB V2 a truly effective highlight.

Full and Easy Control

The upgraded controller of the 1337 RGB V2 is to be found on the upper left edge of the mouse mat. With its slim height of only 9 millimeters, the controller remains low and inconspicuous. The controller is connected to the PC via a detachable USB cable with a micro-B connector. A single, easy-to-reach button on the top controls and sets the lighting effects.

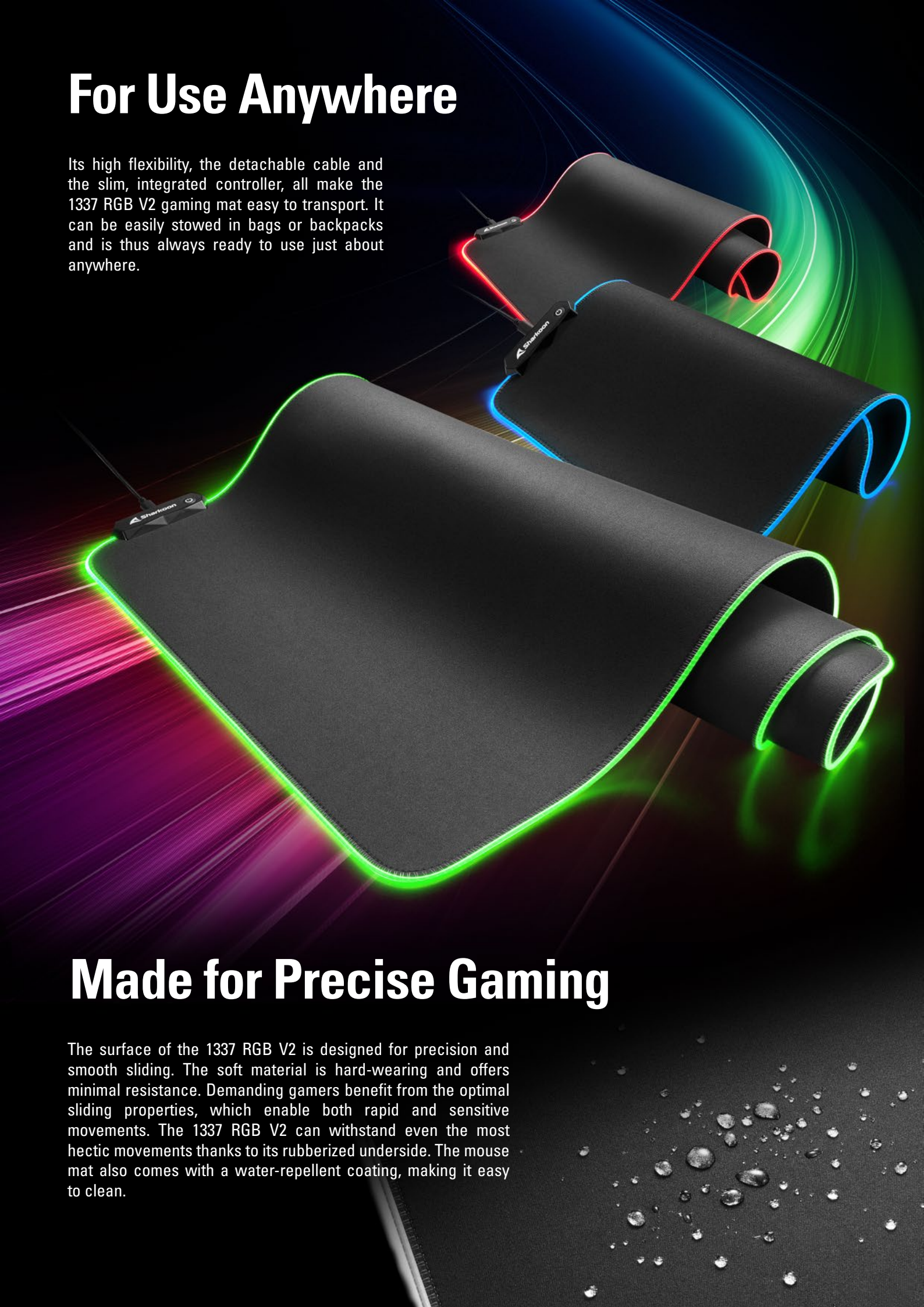


For Use Anywhere

Its high flexibility, the detachable cable and the slim, integrated controller, all make the 1337 RGB V2 gaming mat easy to transport. It can be easily stowed in bags or backpacks and is thus always ready to use just about anywhere.

Made for Precise Gaming

The surface of the 1337 RGB V2 is designed for precision and smooth sliding. The soft material is hard-wearing and offers minimal resistance. Demanding gamers benefit from the optimal sliding properties, which enable both rapid and sensitive movements. The 1337 RGB V2 can withstand even the most hectic movements thanks to its rubberized underside. The mouse mat also comes with a water-repellent coating, making it easy to clean.



1337 RGB

ILLUMINATED GAMING MOUSE MAT

V2

General:

- Surface: Textile
- Adjustable Illumination
- Nonslip Rubber Base
- Water-Repellent Surface
- Transparent Stitching
- Connector: USB
- Textile Braided Cable
- Cable Length: 180 cm

SIZE **360**

- Dimensions (L x W x H):
360 x 270 x 3 mm
- Weight: 235 g

SIZE **800**

- Dimensions (L x W x H):
800 x 300 x 3 mm
- Weight: 510 g

SIZE **900**

- Dimensions (L x W x H):
900 x 425 x 3 mm
- Weight: 780 g

Package Contents:

- 1337 RGB V2
- USB Cable (Type A Plug to
Micro-B Plug)
- Manual

