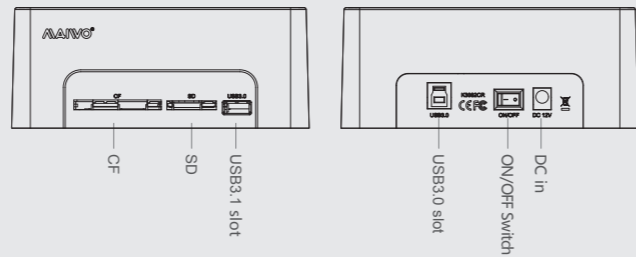


K3082CR HDD Docking Station

Specification

Product name:

MAIWO K3082CR HDD Docking Station With CF/SD/USB HUB



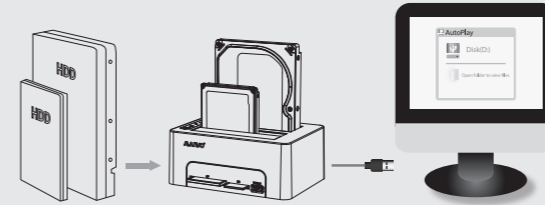
Item name:	MAIWO clone HDD Docking Station
Support:	2.5"/3.5" inch HDD or SSD
HDD QTY:	2pcs
Interface:	SATA
Interface:	USB3.0compatible with USB2.0/1.1
Function	Card reader, USB HUB, 1:1clone, data read and write
Size:	152*109*62mm
OS:	WindowsXP/7/8/10, MAC OS
Package contents	HDD Docking Station, User manual, USB cable, Power adapter

①

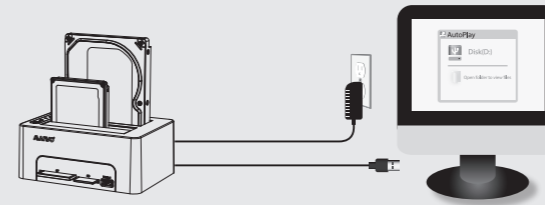
Installation

1. Hard drive read and write :

1.1.Insert 2.5"/3.5" hard drive into the drive slot, make sure the hard drive stable
Connect the Docking USB to a free USB port.



1.2.Plug AC power adapter ,then turn on power button.



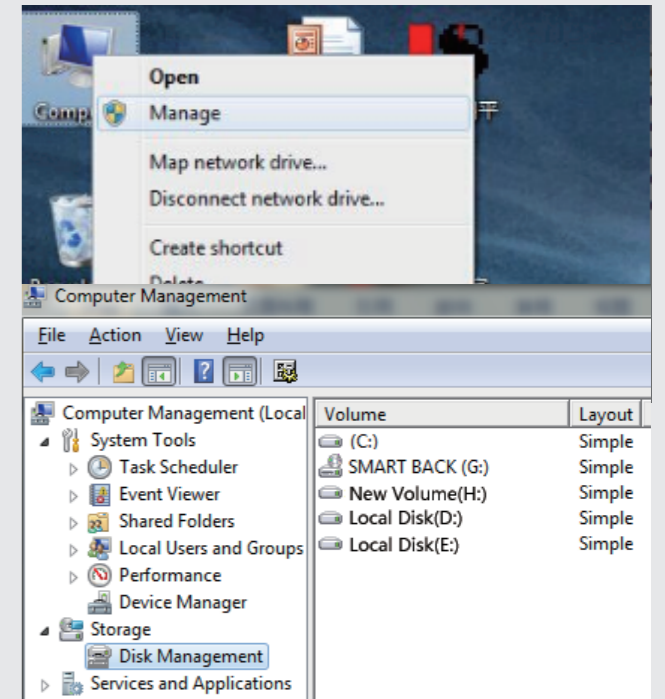
1.Remark: If they are formatted Hard Drives, will be recognized directly. But if they are new Hard Drives, you must initialization and formation before recognized
2.When use cardreader, you can only choose one type, CF or SD, can not use two at the same time.

②

Installation

2. New hard drive format.

2.1.View "computer - Manage - disk management" to find the new disk .

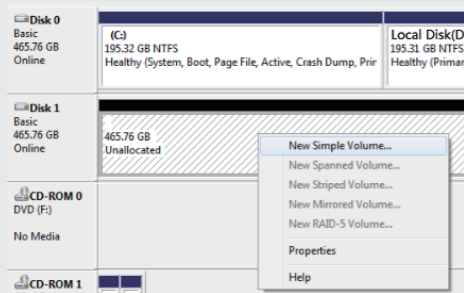


③

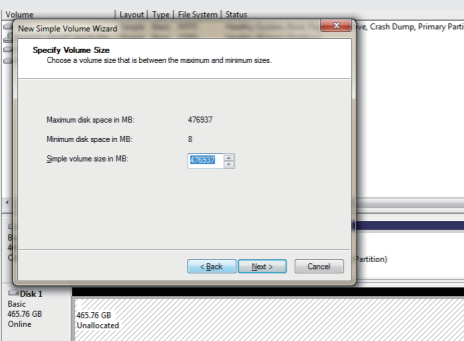
Installation

2. New hard drive format.

2.2. Right click the "Disk 1", then click "New Simple Volume".



2.3. According to the instruction, choose the size of partition, then click "Next" to finish.

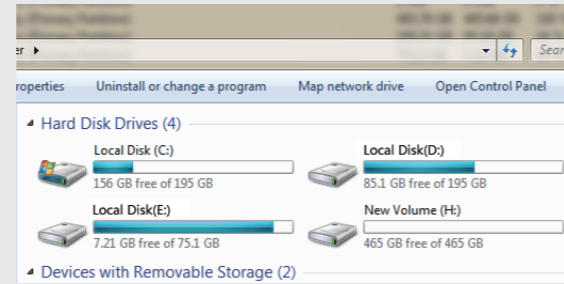


④

Installation

2. New hard drive format.

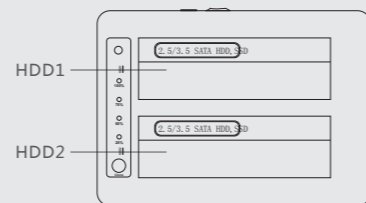
2.4. Then you can find the new hard disk in the "Computer", it's ready to be use.



Operation Guide

3. Clone

3.1. Insert 2.5" /3.5" hard drive to HDD1, and HDD2.(Attention: HDD1 must <= HDD2 or it can not clone)

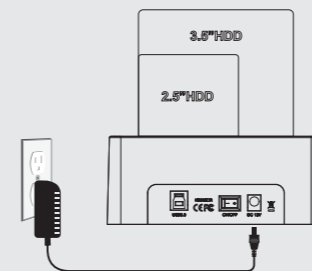


⑤

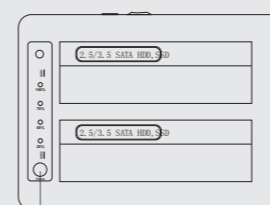
Operation Guide

3. Clone

3.2.Turn on power switch, and connect wall plug AC adapter , don't connect with USB cable.



3.3. Press clone button last for seconds,then it starts to clone when blue LED lights is on.



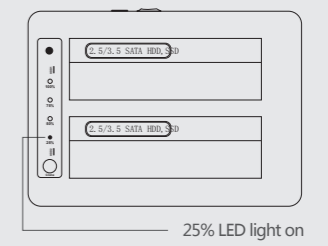
Keeping pressing clone button til all clone blue lights on, then release it

⑥

Operation Guide

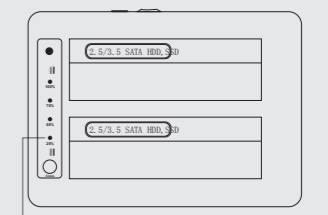
3. Clone

3.4.The access LED of 25% will be blinking when it starts to clone. LED lights show the clone progress from 25%, 50%, 75%, 100%.



25% LED light on

3.5.When 4 LED lights illuminate in blue, clone is complete .



100% LED light on

⑦